

# South Dakota Beef Industry Ag Teacher



## Materials and Resources

Please Specify Quantity of Materials and Include Shipping Address



### True Beef: Pasture to Plate

This guide contains 8 lessons designed for High School students in a Culinary Arts or Family and Consumer Sciences program, however, STEM connections have been included for all lessons making it easy for teachers to make connections across the curriculum.

**1 DVD per classroom Qty \_\_\_\_\_**

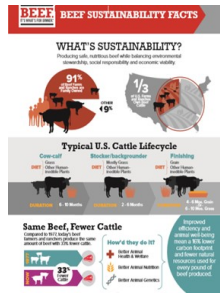
Free PDF to download: <http://www.agfoundation.org/files/AFBFA-True-Beef-Lesson-Plan-flow-res.pdf>



**New Value Cuts from the Chuck & Round Fact Sheet Qty \_\_\_\_\_**



**Today's Beef Choices Fact Sheet Qty \_\_\_\_\_**



**Beef Sustainability fact sheet Qty \_\_\_\_\_**



**#10506 Retail Cuts Poster (one poster per school ) Qty \_\_\_\_\_**

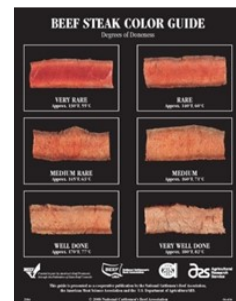
**#10505 8x10 handout Qty \_\_\_\_\_**



**Understanding Marbling Fact Sheet Qty \_\_\_\_\_**



**Understanding Beef Quality Grades Fact Sheet Qty \_\_\_\_\_**



**Beef Steak Color Guide Fact Sheet Qty \_\_\_\_\_**

### Additional Internet Resources—videos & free material available to download

[www.sdbef.org](http://www.sdbef.org) [www.beefitswhatsfordinner.com](http://www.beefitswhatsfordinner.com) [www.beefresearch.org](http://www.beefresearch.org)

Visit: Beef. It's What's For Dinner YouTube page

**Return this form to the address below & include your return mailing address**

Holly Swee or [hswee@sdbef.org](mailto:hswee@sdbef.org)  
46969 299th St.  
Beresford, SD 57004

