

South Dakota Beef Industry Ag Teacher



Materials and Resources

Please Specify Quantity of Materials and Include Shipping Address



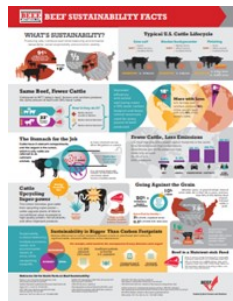
Retail Cuts Poster (one poster per school)
Qty _____ 8x10 handout Qty _____



New Value Cuts from the Chuck & Round
Fact Sheet Qty _____



Today's Beef Choices Fact
Sheet Qty _____



Beef Sustainability fact sheet
Qty _____



Beef Sustainability fact sheet
Qty _____



Understanding Marbling Fact
Sheet Qty _____



Understanding Beef Quality
Grades Fact Sheet Qty _____



Beef Steak Color Guide Fact Sheet
Qty _____

Additional Internet Resources—videos & free material available to download

www.sdbef.org www.beefitswhatsfordinner.com www.beefresearch.org

Visit: Beef. It's What's For Dinner YouTube page

Return this form to the address below & include your return mailing address

Holly Swee or hswee@sdbef.org
46969 299th St.
Beresford, SD 57004

